

**BROCHURE**

# **UNISTRUT®**

**SOLAR FRAMING COMPONENTS**

A PART OF

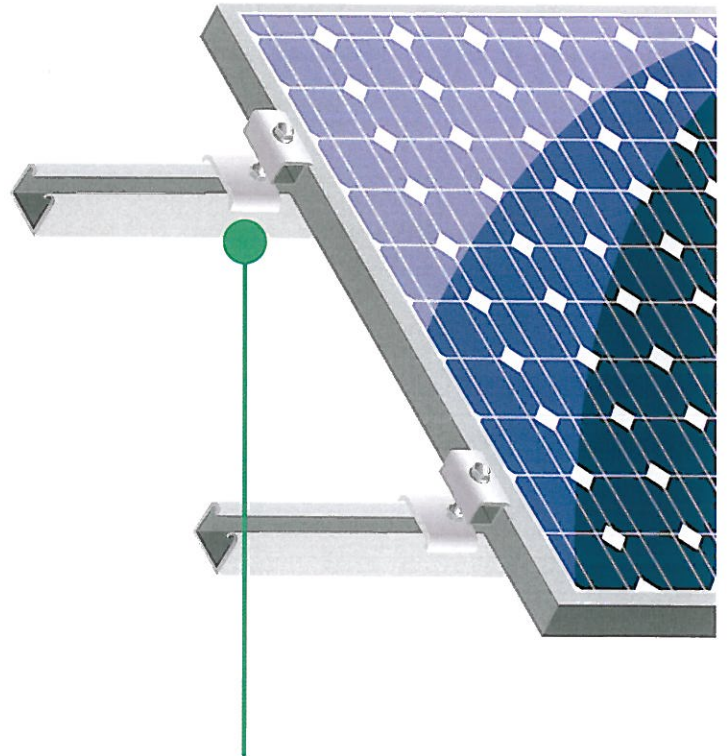


## Key Advantages

- The market's only specific panel mounting components made exclusively for use with Unistrut.
- Simple design used by the industry for a variety of installation methods and applications.
- Stainless steel hardware included with all solar clamps.
- Available in Black or Silver Anodized (Material AA-6063-T6) for corrosion protection and sleek appearance.
- Best fit with Unistrut channel to create less penetration, and superior slip resistance.
- Designed for maximum loads up to 90 miles per hour.
- Available and supported by Unistrut's national network of distributors.
- BUY AMERICA – MADE IN THE USA

**Please inquire or visit  
[www.unistrut.com](http://www.unistrut.com)**

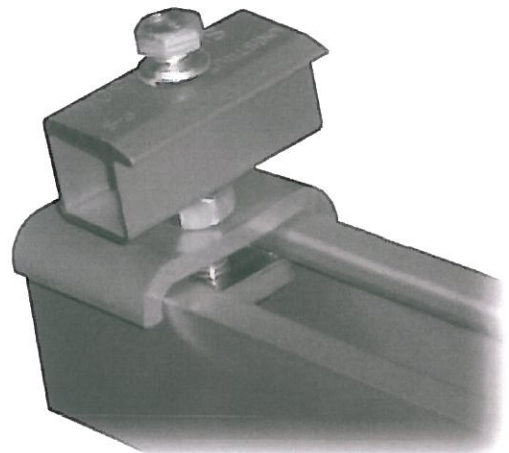
## Unistrut Solar Co



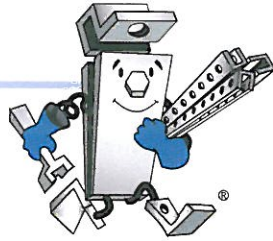
### SR200 – Solar End-Clamp

- End-clamp design for use with strut based racking system.
- Patent-pending end-stop feature allows use with vertical strut.
- Meets uplift loads of 350 lbs.

\* Patent Pending



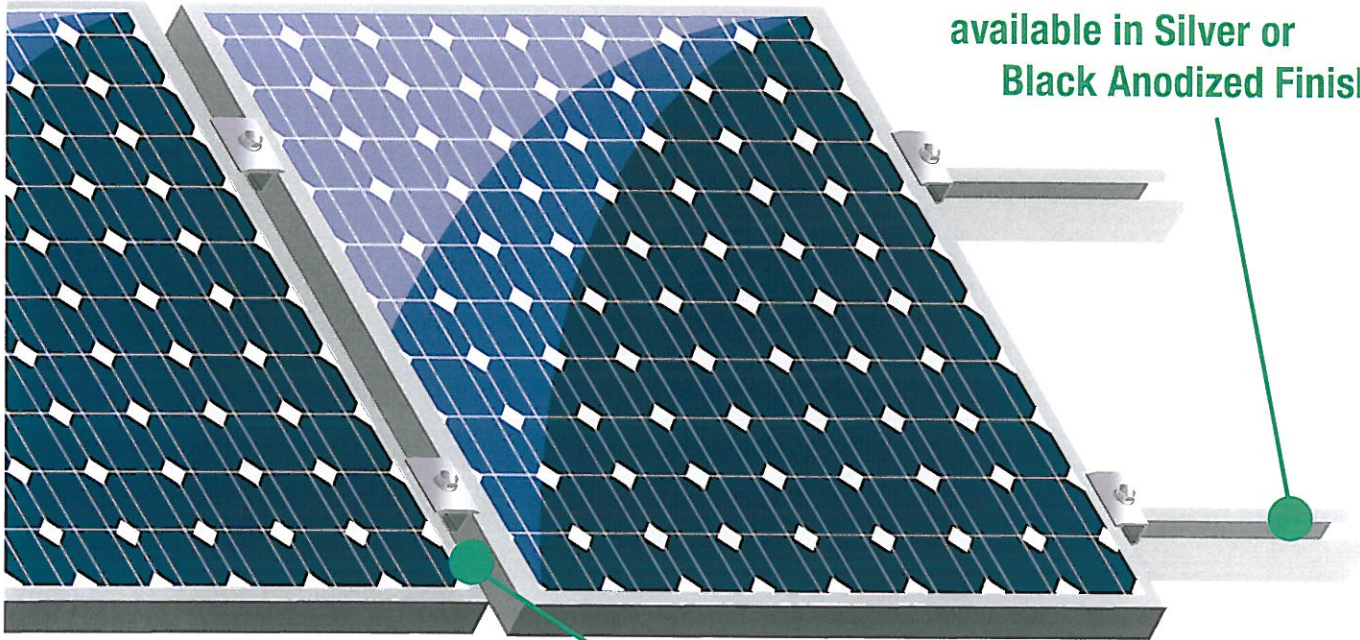
# Components



# UNISTRUT®

A PART OF  **atkore**  
INTERNATIONAL

Aluminum Channel  
available in Silver or  
Black Anodized Finishes



## WEEB – WMC

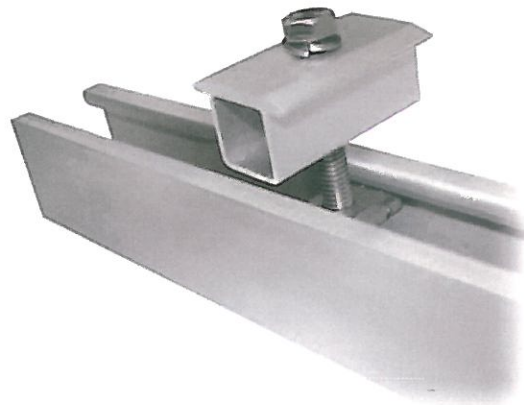
### WASHER ELECTRICAL EQUIPMENT BONDING

- Patented design features stainless steel teeth that pierce into anodized aluminum, providing a gas tight connection which prevents oxidation.
- Meets ANSI/UL467 requirements for bonding/grounding systems.
- Quick installation that is safe, reliable and consistent.



## SR100 – Solar Mid-Clamp

- Mid-clamp design for use with strut based racking system.
- Provides .8" (21 mm) panel spacing.
- Meets spacing requirements of WEEB-WMC.
- Meets uplift loads of 350 lbs.



16100 South Lathrop Avenue  
Harvey, IL 60426  
TOLL-FREE / 800-882-5543  
FAX / 708-339-7814  
[www.unistrut.com](http://www.unistrut.com)

585 Finley Avenue  
Ajax, Ontario, L1S 2E4 Canada  
PHONE / 905-683-8131  
FAX / 905-683-8987



**UNISTRUT**

*Columbia-MBF*

**KAF-TECH**



**UNISTRUT**  
Construction

**GEM**  
FABRICATION

**RAZOR**  
RIBBON

**TECTRON**Tube