



EDGE CONSTRUCTION SUPPLY

SALES—RENTALS—SERVICES—REPAIRS

Serving the Construction industry since 1949

Construction Supply

RENTAL EQUIPMENT AND REPAIR SERVICES



We **Rent** What We Sell • We **Repair** What We Sell • Parts Available

www.edgecs.com

SPOKANE
1503 E. Riverside Ave.
Spokane, WA 99202
(509) 535-9841
(800) 348-4808
(509) 534-3139 (Fax)

YAKIMA
812 E. Mead
Yakima, WA 98903
(509) 248-1144
(800) 243-5582
(509) 575-4696 (Fax)

EUGENE
490 S. Bertelsen
Eugene, OR 97402
(541) 342-3641
(800) 944-0165
(541) 343-1753 (Fax)

MEDFORD
1789 Sage Rd.
Medford, OR 97501
(541) 779-0187
(800) 871-3919
(541) 773-4599 (Fax)

BILLINGS
120 Moore Lane
Billings, MT 59101
(406) 248-7196
(800) 272-7196
(406) 248-7269 (Fax)

GILLETTE
105 Warren Ave.
Gillette, WY 82716
(307) 682-8522
(800) 670-6851
(307) 682-8576 (Fax)

BOISE
2000 Century Way
Boise, ID 83709
(208) 377-0158
(800) 528-5118
(208) 377-0978 (Fax)

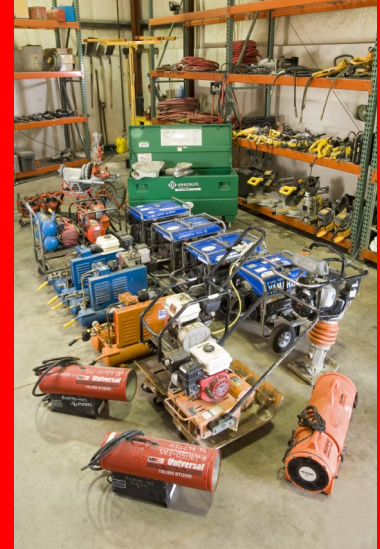
IDAHO FALLS
760 W. Broadway
Idaho Falls, ID 83402
(208) 522-7082
(208) 529-5456 (Fax)



Construction Supply

Rental & Repair

2013



- We offer a complete repair department with factory-trained technicians servicing virtually all makes of equipment.
- Our extensive rental department carries all the tools and machines you need to get the job done

Edge Construction Supply

Rental Guide Table of Contents

| | |
|---|-------|
| Bending, Crimping & Cable Cutting | 1 |
| Cable Pulling Equipment and Accessories | 2 |
| Threading & Grooving Equipment | 3 |
| Lifting & Material Handling | 4 & 5 |
| Hydraulic Lifting | 4 |
| Aerial Work Platforms | 6 |
| Concrete Equipment | 7 |
| Power Hand Tools | 8 |
| Powder & Gas Tools | 9 |
| Pneumatic Tools & Compressors | 10 |
| Generators & Temp Power | 11 |
| Fans & Pumps | 12 |
| Misc. Equipment | 12 |
| Ask About | 13 |
| Repair & Service Information | 14 |

BENDING, CRIMPING & CABLE CUTTING



Construction Supply



**GREENLEE 555
1/2 - 2" RIDGID EMT-IMC**



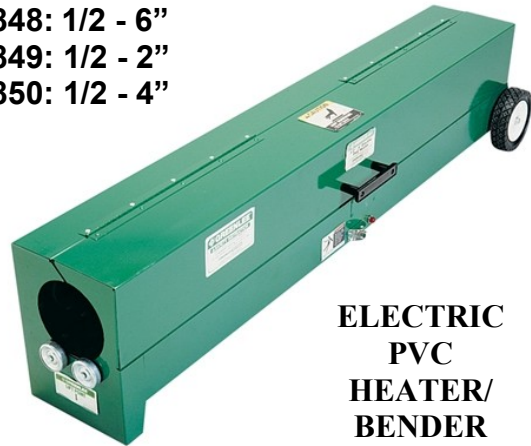
CRIMPERS & CUTTERS



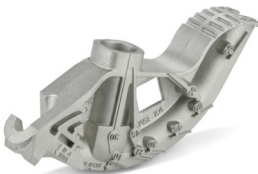
**GREENLEE
881CT**

**2 1/2 - 4" RIDGID
EMT-IMC**

848: 1/2 - 6"
849: 1/2 - 2"
850: 1/2 - 4"



**ELECTRIC
PVC
HEATER/
BENDER**



HAND BENDER



**RATCHET
CABLE
BENDER**



WIRE STRIPPERS



CABLE CUTTER

PULLING EQUIPMENT



**CABLE
PULLERS**



**GREENLEE
6805
TUGGER**

**MAXIS
PULL-IT 6000**



PULLING ROPE

ACCESSORIES



**REEL
STAND**

**KNOCK
OUT
SETS**



**WIRE
CARTS**



GUIDE SHEAVES



www.edgecs.com

THREADING & GROOVING EQUIPMENT



Construction Supply



300 COMPLETE
1/8 - 2"



141: 2 1/2 - 4"

161: 4 - 6"



HAND RATCHETING
12 R SET: 1/8 - 2"



700 POWER DRIVE
1/8 - 2"



918
1 - 12" CAPACITY



916
2 - 6" CAPACITY



TRI-STANDS



No. 254

No. 2 S

No. 283

THREADING & GROOVING ACCESSORIES



258
CUTTER



PROPRESS TOOL



CUTTERS

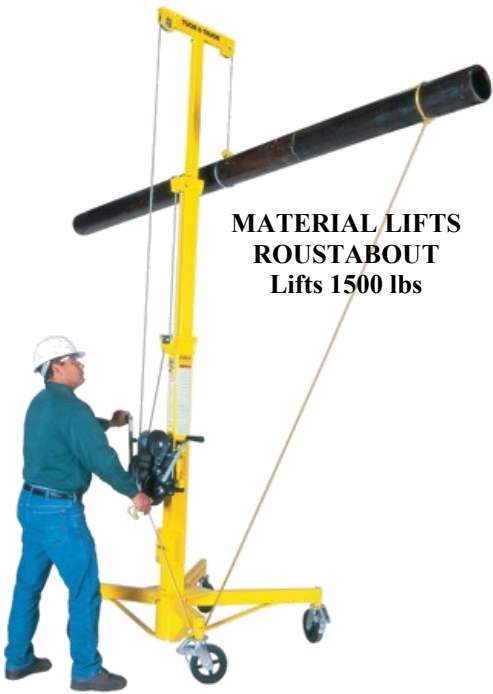


SOIL PIPE CUTTERS

“Problems are only opportunities!” Henry Kaiser

Ask our knowledgeable staff about all our rental solutions

LIFTING & MATERIAL HANDLING



**MATERIAL LIFTS
ROUSTABOUT**
Lifts 1500 lbs



PIPE STANDS



CRICKET
Moves 1,000 lbs



GRASSHOPPER
Moves 2,000 lbs



GENIE SUPER HOIST
CO2 Powered
250 lb capacity



SUMNER LIFTS
650 lb Capacity
12', 18' & 24' heights



GENIE LIFTS
650 lb Capacity
12' & 24' heights

HYDRAULICS



1 TON WEDGE



HAND PUMPS



50 TON



25 TON



100 TON

LIFTING & HANDLING



Construction Supply



GANTRY CRANE GH-2T
4400 lb Capacity

SUMNER

DRYWALL LIFTS



JET

PALLET JACKS

CM

CHAIN HOISTS

GOLO POWER WINCH



HILMAN ROLLERS
WWW.HILMANROLLERS.COM

AERIAL WORK PLATFORMS



Construction Supply



Genie
A TEREX BRAND



PERSONNEL LIFTS
Available in 25' & 30' heights



WERNER PUMP JACKS

INDOOR SCISSOR LIFT
Up to 26' Platform Height



LOUISVILLE LADDER



EXT. LADDERS



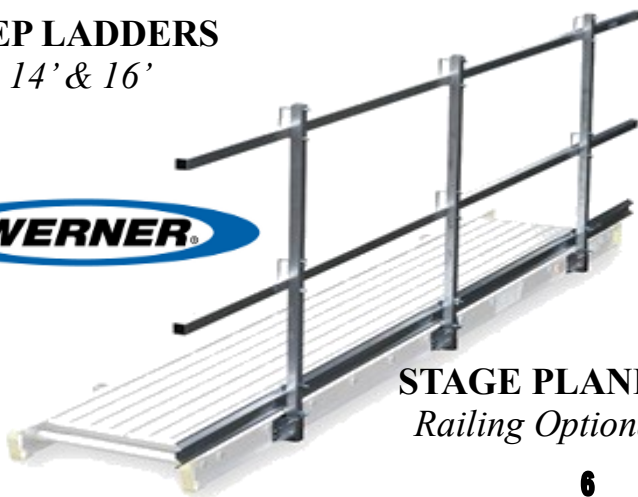
LADDER JACKS



UTILITY SCAFFOLD

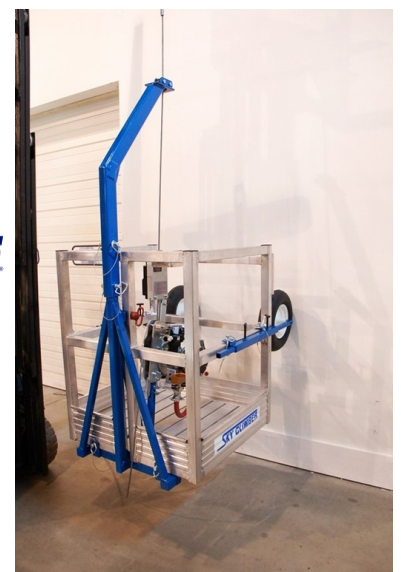
STEP LADDERS
14' & 16'

WERNER



STAGE PLANKS
Railing Optional

SKYCLIMBER
"Excellence in Access" Since 1955



SKYCLIMBER

CONCRETE EQUIPMENT



Construction Supply



GAS SAWS



**FLAT CUT SAWS
&
SOFT-CUT**



DIAMOND BLADES



CORE DRILLS



CORE BITS



**POWER
TROWELS**



**PLATE
COMPACTORS**



HAND CORE DRILLS



RAMMERS



www.edgecs.com

POWER HAND TOOLS



HAMMER DRILLS



DEMO HAMMERS



BREAKERS



SCREW GUNS



IMPACTS



GRINDERS



RECIPROCATING
SAWS



METAL
CUTTING SAWS
AND BLADES



HAND DRILLS



CARBIDE BITS



MAG DRILLS



BAND SAWS



EPOXY
GUNS

POWDER & GAS TOOLS

POWDER ACTUATED FASTENERS



RAMSET D60



RAMSET SA270

GAS POWERED FASTENERS



RAMSET T3SS



RAMSET T3MAG



PASLODE NAILER
2" - 3 1/4"



PASLODE
FINISH NAILER



Construction Supply

www.edgecs.com

PNEUMATIC TOOLS & COMPRESSORS



Construction Supply



FRAMING



POSITIVE
PLACEMENT

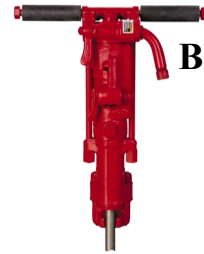


FINISH



ROOFING COIL

ROOFING &
FRAMING
STAPLERS



BREAKERS



IMPACTS



GRINDERS



TOW BEHIND
COMPRESSORS



HAND CARRY &
WHEELED
COMPRESSORS



GENERATORS & TEMP POWER



SPIDER BOX
TEMP POWER



HEATERS



375,000 BTU's



170,000 BTU's



85,000 BTU's



INDIRECT HEATER



ELECTRIC HEATER



www.edgecs.com

FANS & PUMPS



Construction Supply



TRASH PUMP



EVAPORATIVE COOLER



STATIONARY FAN



SWIVEL FAN

CONFINED SPACE EQUIPMENT



TRIPOD LIFELINE



GAS MONITOR



AIR VENTILATION SYSTEM

MISCELLANEOUS EQUIPMENT



LASER LEVEL



"QUIK DRIVE" SYSTEM



VACUUM SYSTEM

Ask About



MIXERS



**GANTRY
CRANS
(2 TON CAPACITY)**
SUMNER



**WOBBLE
LIGHTING**
Lights up the whole
room!



**SEESNAKE
DRAIN CAMERA
SYSTEM**



**THERMAL
IMAGING**



**HALOGEN
FLOOD LIGHTING**



**PRO-PRESS
TOOL**



STEEL DECKING



RENTAL@EDGECS.COM



Repair & Service Information

Our technicians service virtually all makes of equipment. We accomplish quick turnaround and efficient tracking of our customer's tool repairs from start to finish. We repair, stock, and service parts from our extensive tool and equipment inventory and are a factory warranty station for most vendors listed below.

Call for details 800-348-4808.

| | | | |
|--------------------|---------------------|-------------------------|--------------------|
| AIRMAN COMPRESSORS | ENERCO/HEAT STAR | LUG-ALL | POWERS/RAWL |
| ALLEGRO INDUSTRIES | ENERPAC | LUMIDOR | RAMSET |
| ATLAS COPCO | FEIN | M.K. MORSE | REED |
| BIO SYSTEMS | GARDNER BENDER | MAKITA | RIDGID |
| BLACK & DECKER | GENERAC | MARSON | ROLAIR |
| BOMAG | GENIE | MASTER HEATERS | ROTHENBERGER |
| BOSCH | GOLO | MBW | SUMNER |
| BURNDY | GREENLEE | METABO | SHOP VAC |
| CEP ELECTRICAL | GREENLEE FAIRMONT | MILLER FALL PROTECTIONS | SIMPLEX HYDRAULICS |
| CHICAGO PNEUMATIC | GUARDIAN | MILWAUKEE TOOL | SKIL |
| CM HOIST | HITACHI | MOTOROLA RADIO | SKYCLIMBER |
| COLEMAN CABLE | HOMELITE GENERATORS | MULTIQUIP | SIMPSON QUICKDRIVE |
| CST BERGER | HOUGEN | NITTO-KOHKI | SIOUX |
| CURRENT | HUSQVARNA | OZTEC | STOW |
| DBI/SALA | INGERSOLL RAND | PARTNER | TARGET |
| DEWALT | ITW BUIDEX | PASLODE | UPRIGHT |
| DIAMOND PRODUCTS | JENNY COMPRESSORS | PLS LASERS | UNIVERSAL HEATERS |
| DUOFAST | JET | PNEUTEK | WEKA/CORE DRILLS |
| EDCO | KETT | PIONJAR GAS DRILLS | WHEELER REX |
| EMGLO | L.B. WHITE | PORTER CABLE | WOBBLE LIGHT |
| | | | YAMAHA GENERATORS |

For all of your equipment repair & service needs
WWW.EDGECS.COM